

### The View from the President's Corner

Summer has come in like a very hot lion. Now is the time to sit in an air-conditioned room and work on all of the images you took during the cooler months.

Our trial session for the Rules Changes seems to be going smoothly and we'll need to have a vote the end of July. We'll send the ballots out by email (snail mail for any one without email) so that everyone gets a voice. I'll have more on this very soon.

By the time you read this you will, hopefully, have seen Gus Feissel's Master Presentation. These programs are always wonderful. Janet has more great programs coming up so do keep your ear out for what's happening and check the web site.

If you are competing with the hope of advancing, please check your number of submissions to make sure you have the correct number in. We will do an adjustment due to the permitted number of submissions changing from three per competition to two per competition. If you have any questions, please email Janet Gelfman. She heads the advancement committee and has the numbers.

We have several events happening over the next few months, so heads up. The weekend of July 14th is the High Sierra wildflower field trip. Be sure to contact Gary Saxe (via the roster) if you are interested.

Also, that same weekend is the Montgomery Village Show that we are doing with the Water Color Artists of Sonoma County (WASCO). Please email me if you are interested in participating in that.

We also need to start thinking about our 3rd Annual Huge Sale at the Luther Burbank Art & Garden Center the first Saturday of October. We'll need lots of volunteers that week to collect and price items, to place the items on tables Friday, and to help with the sale on Saturday and with the clean up. Please be collecting any items you would like to donate to this sale. We netted just over \$4000 last year and about \$3800 the year before, so this is an important fund-raiser for the Center – our Home.

<b>~ CONTENTS ~</b>	
<b>Exhibitions/Calls to Artists</b>	<b>2</b>
<b>Program Notes</b>	<b>2</b>
<b>Acknowledgments</b>	<b>3</b>
<b>Field Trips</b>	<b>3 &amp; 5</b>
<b>Competition Results</b>	<b>4</b>

Good shooting!  
Donna G. Campbell

**~ CALENDAR ~**

**JULY**

- 7 **Electronic entries due**
- 12 **Info sheet items to Donna**
- 13 **Monthly competition - 7 p.m.**
- 21 **Electronic entries due**
- 24 **Newsletter items to Marcia**
- 26 **Info sheet items to Donna**
- 27 **PIC - LIGHT & SHADOWS**  
7 p.m.

**AUGUST**

- 4 **Electronic entries due**
- 9 **Info sheet items to Donna**
- 10 **Monthly competition - 7 p.m.**
- 18 **Electronic entries due**
- 23 **Newsletter items to Marcia,**  
**Info sheet items to Donna**
- 24 **PIC - TRASH - 7 p.m.**

**SEPTEMBER**

- 8 **Electronic entries due**
- 13 **Info sheet items to Donna**
- 14 **Monthly competition - 7 p.m.**
- 21 **Board meeting - 6:30 p.m.**
- 22 **Electronic entries due**
- 23 **Newsletter items to Marcia**
- 27 **Info sheet items to Donna**
- 24 **PIC - ACTION - 7 p.m.**

## ~ Exhibitions and Ongoing Calls to Artists ~

### EXHIBITION

**Kendall Jackson Tomato Festival Garden-Inspired Art Show.** The Kendall-Jackson Annual Heirloom Tomato Festival proceeds benefit *The School Garden Network of Sonoma County*, providing funds to local schools to enrich learning through gardening.

All entries must have a garden theme and can include tomatoes. Kendall-Jackson Wine Center Entry details at: <http://www.kj.com/events/tomato-festival/contest-exhibits/06artentry.pdf>

Entry fee \$25 per image

**Entry deadline July 15** (received by KJ).

Entries may be slide, JPG on CD, or JPG by email.

Prizes of \$1000, \$500, \$250

Exhibit is September 8-10 with extended show for some entries September 13-30.

### ONGOING CALLS TO ARTISTS

**Plaza Arts Gallery** in Healdsburg is accepting submissions for its Resident Artists program. Resident artists are given an 8' by 8' space to show their work on an ongoing basis for a modest fee.

Sitting the gallery is required. Please send SASE for application form to Plaza Arts, 130 Plaza Street, Healdsburg 95448 or pick one up at the gallery. Phone: (707) 431-1970.

**Studio Direct Art** is a privately owned company that shows the work of emerging artists. Studio Direct Art is committed to showing original, high quality fine art. Submit slides or high resolution CD of available work. Please provide a SASE for the return of your materials. Artists' information will be reviewed by a jury of Studio Direct Art staff members. Electronic portfolios or Web site links can be e-mailed. Work is assessed for its quality, originality, and potential to sell. The review process takes from 6-8 weeks. All of our works are on consignment from the artist. We have short-term, renewable, non-exclusive contracts with many of our artists. Though our contracts are not exclusive, we do request right-of-first-refusal from our artists. Studio Direct Art, 226 Edelen Ave. #21 Los Gatos, CA 95030. For more information: Call (408) 718-3191 Email: [review@studiodirectart.com](mailto:review@studiodirectart.com). Website: [www.studiodirectart.com](http://www.studiodirectart.com).

**IncredibleArt.com** is looking for artists wishing to promote and sell on the web. No fee. Commission on sales. Submit five to ten slides, transparencies, high-quality photographs, and/or digital files, bio/CV, SASE, and a bio (optional) to: IncredibleArt.com, Attn.: Artist Relations, 936 Kings Hwy, Brooklyn, NY 11223. Phone: (718) 382-6355. Fax: (617) 507-8016. Email [CustomerService@IncredibleArt.com](mailto:CustomerService@IncredibleArt.com) or visit the website at [www.incredibleart.com](http://www.incredibleart.com).

**LINK** independent curators seek art for shows. Send slides, statement, SASE to: 626 Costa Dr., Napa, CA 94558.

**Gallery Route One**, a non-profit, artist-run gallery in Point Reyes Station, is accepting applications for membership. Members support the gallery both financially and with volunteer hours in West Marin. Please visit [www.galleryrouteone.org](http://www.galleryrouteone.org)

### July Program Notes

Our July program will focus on PSA - the Photographic Society of America. The program will be presented by SRPS member, Elvira Lavell, our PSA club representative and a PSA member since 1986. She will begin with a TOPS Slide show. These donated slides are from Top photographers in PSA, who are invited to submit their best work for this popular program. We will view images from the General Color Slide, Nature, Photo Travel and Photojournalism Divisions.

We will also view the 2005 International Club Slide Competition (ICSC) Travel show. SRPS has images from two gold medal exhibitors in this slide program.

A short program, "This is PSA", will explain some of the benefits of PSA membership and Elvira will answer any questions regarding membership.

The 2006 PSA annual conference will be held in Baltimore, Maryland, September 3-9, 2006. Check out the extensive program schedule and other information in the June PSA Journal, which is located in the SRPS Library. Additional information is available on the web at: [www.psa-conference.org](http://www.psa-conference.org)

### FAIR ENOUGH?

Email Fair results to *Positive Print* editor, Marcia Hart. Include (1) your name and that of the event, (2) title(s) of award winning entry(s), (3) ribbon(s) won, and (4) special awards and sales. All Fair results will appear in the August *Positive Print*.

**2005 END OF YEAR WINNERS  
AA - GENERAL  
"APPROACHING STORM" - JERRY MESHULAM**



**~ OUR THANKS TO ~**

THE CAMPBELLS, THE GELFMANS  
AND THE FEISSELS  
FOR OUR REGAL REFRESHMENTS...

AND, TO OUR JUNE JUDGE,  
BRENDA THARP

**WE ARE GRATEFUL!**

**~ KUDOS ~**

TO SHARON FEISSEL. HER IMAGE, "BLIND SIGHT", WHICH ALONG WITH "DAYDREAMING AT THE DINER", WAS JURIED INTO AN UPCOMING (SEPTEMBER THRU DECEMBER) EXHIBITION AT THE CENTER FOR FINE ART PHOTOGRAPHY IN FORT COLLINS, COLORADO, WAS ALSO SELECTED FOR AN END OF YEAR EXHIBITION AT THE DENVER AIRPORT. YOU GO, GIRL!

**~ FIELD TRIPS ~**

**High Sierra Wildflowers  
July 14, 15 and 16**

We will photograph in the Blue Lakes area. They are located twelve miles off highway 88 East of Carson Pass. Lots of Wildflowers. **For more details, see page 5 below.**

**Scavenger Shoot  
July 29**

**Time:** Meet at 8:30 AM. Start at 9:00. Finish at 11:00. Proceed to BBQ.

**Place:** Healdsburg Plaza

**Directions:** From northbound Hwy. 101, take Healdsburg Avenue off ramp. Take Healdsburg Avenue to Matheson Street. Turn left on Matheson then proceed one half block to public parking. Turn right into public parking. Walk to center of parking area on the east side take foot bridge to a fountain near the entrance to Bear Republic Brewing Company (345 Healdsburg Avenue).

We will hand out instructions and the list of items to Photograph there. We will pick subjects in and around the Healdsburg Plaza. Directions to the BBQ will be handed out then.

Each person will take 12 digital images. All images should be taken in the JPEG format. Make sure that your memory card is clear of all images before starting the hunt.

We will have the BBQ lunch in Alexander Valley at the home of Donna Campbell's daughter. She will host the BBQ lunch. Members need to bring their own beverage for themselves and their guest.

If you plan to participate, you will need to sign up for this event. This will help us plan for the food. Please sign up at the July meetings or Email Gary Saxe at [saxesr@sbcglobal.net](mailto:saxesr@sbcglobal.net).

Donna will take charge at the BBQ. She will need volunteers to help setup and cleanup for the event. **We need: (1) a person who can BBQ the meat and (2) someone who can download images to a laptop for the creation of a CD. Please contact Donna Campbell or Gary Saxe if you can help.**

**Bodie State Park  
September 15, 16 and 17**

We will be at Bodie on Saturday, September 16th. Bodie State Park offers a photographers day the third Saturday of the month from May thru October. The cost is \$30 per person and advance reservations are recommended. This allows you into the Park one half hour before sunrise until a half hour after sunset. If you are interested in reserving a place, mail a check payable to **Friends of Bodie, Attention Terri, PO Box 515, Bridgeport, CA 93517.** Limit 50 Photographers.

If you have questions about any of our field trips, contact Gary Saxe. (See club roster for contact information.)

## JUNE COMPETITION RESULTS

### NATURE

**Level - B**

1st ... Ray Legorreta	Flame Skimmer
2nd ... Marcia Hart	Galapagos Volcanic Formations
3rd ... Butch Conner	Pt. Reyes Seashore

**Level - A**

1st ... Ira Gelfman	Egret's First Flight
2nd ... XXX	XXX
3rd ... XXX	XXX

**Level - AA**

1st ... David Wallace	Sonoma Coast Fall Sunset
2nd ... Bobbi Chamberlain	Red Columbine Bud
3rd ... XXX	XXX

**Level - Masters**

1st ... Art Butterfield	Northern Flicker
2nd .. Art Butterfield	Alabama Hills Boulder
3rd ... Marilyn Brooner	White Egrets Building Nest

### CREATIVE

**Level - B**

1st ... Brad Boothe	Hot Coffee
2nd ... Linda Caldwell	Sunflower Medley
3rd ... Gene Gross	Egret

**Level - A**

1st ... Liz Lawson	Waiting
2nd ... XXX	XXX
3rd ... XXX	XXX

**Level - AA**

1st ... Janet Gelfman	La Placita
2nd ... Sharon Feissel	Lupine Lace
3rd ... XXX	XXX

**Level - Masters**

1st ... XXX	XXX
2nd ... XXX	XXX
3rd ... XXX	XXX

### GENERAL

**Level - B**

1st ... Sheri Prager	Sunday Morning
2nd ... Joe Simons	New Life
3rd ... Joe Simons	Inner Poppy

**Level - A**

1st ... Bob Orr	Barcelona Reflections
2nd ... Kathie Kameoka	Proud Mother
3rd ... Christine Bartl	Service

**Level - AA**

1st ... Drew Jackson	Chevy
2nd ... Jim Thomason	Cozy Up With the Big Guys
3rd ... Diane Miller	Spring Grape Leaves with Dew

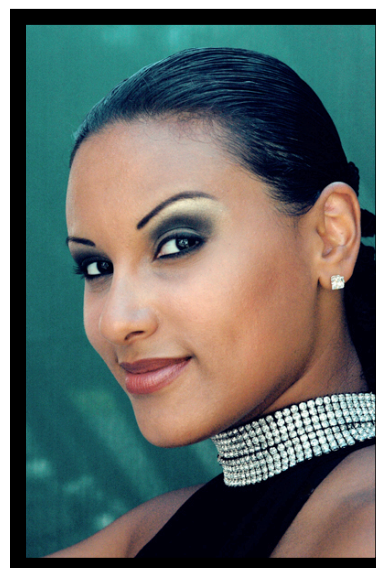
**Level - Masters**

1st ... Gus Feissel	With Malice Aforethought
2nd ... Gus Feissel	Mustard & Vines
3rd ... Howard Bruensteiner	Oak & Concrete

### PIC - PORTRAIT/SELF-PORTRAIT

1st ... Gene Gross	Tango Lady 1
2nd ... Edmond Bridant	The Chess Player
3rd ... David Henneman	Puffin'

**TANGO LADY 1 - GENE GROSS**





## July 14, 15 and 16 High Sierra Wildflowers

We will photograph in the Blue Lakes area. The location is twelve miles off highway 88 East of Carson Pass. Many varieties of wildflowers can be found from the 7000 foot level to the alpine region of the central Sierra. This year, we should see beautiful lakes with large groups of wildflowers and snowcapped peaks as a backdrop. There are many small ponds in the area with water lilies and some have several varieties of ducks. For those who have four wheel drive, there is an easy drive to the Sierra crest where alpine flowers grow and excellent vistas abound.

Directions: Take Blue Lakes Road 6.6 miles east of Carson Pass or 2.5 miles west of Hwy. 89 and Hwy. 88 junction for 12 miles. Go past Lower Blue Lake and Upper Blue Lake to Upper Blue Lake Campground.

Gary and Marni Saxe will be camping at the Upper Blue Lake campground beginning Thursday, July 13th. There are **no reservations taken for this campground**. Therefore, it is advisable to come up Thursday or Friday, if possible. Because of the late snow pack, it is unknown at this time where the best photo opportunities will be. Our group will gather at 9:00 a.m. on Saturday at the Saxe campsite for advice on possible photo opportunities.

A potluck will be held at the Saxe campsite on Saturday evening. Note: Bring everything that you will need. The nearest store and gas is over 15 miles away. Fill your gas tank at Meyers if you take Hwy 50 to 89, the fastest way there, or Jackson if you take Hwy 88.

For the non-campers, a good place to stay is Kirkwood Mountain Resort - [www.kirkwood.com](http://www.kirkwood.com). The online rates chart is for 2005 midweek, but it has been reported that the 2006 rates - seven days a week - are the same. The rates range from \$89 and up depending on the number of people and size of the accommodation. Kirkwood has dining facilities. Gus and Sharon Feissel stayed there a few years ago and found it quite nice. The chair lift takes you up the mountain where there also should be wild flowers. The other lodging near where we are going is Sorensen's - [www.sorensensresort.com](http://www.sorensensresort.com) - but it is more expensive. Lodging is also available at South Lake Tahoe.

**Caution: Mosquitoes are here in force, so bring lots of repellent. Campers should take precautions for bears.** We did not have bears in camp last year the two times we were there, but in years past there have been problems in the area.

### Campgrounds in the Blue Lakes Area

#### Lower Blue Lake

16 camp units. Take Blue Lakes Road 6.6 miles east of Carson Pass or 2.5 miles west of Hwy. 89 and Hwy. 88 junction for 12 miles. **No supplies available.** 8100 ft. Fee.

#### Middle Creek

5 camp units. One and a half miles beyond Lower Blue Lake Campground. 8200 ft. Fee.

#### Upper Blue Lake

**We will camp here as this area is the last to fill.**

32 camp units. 1.3 miles past Upper Blue Lake Dam Campground. 8200 ft. Fee.

#### Upper Blue Lake Dam

25 camp units. One-quarter mile beyond Middle Creek Campground. 8200 ft. Fee.

#### Eldorado National Forest

100 Forni Road, Placerville, CA, 95667.  
Phone: 530-644-6048

### Map to Blue Lakes Area

